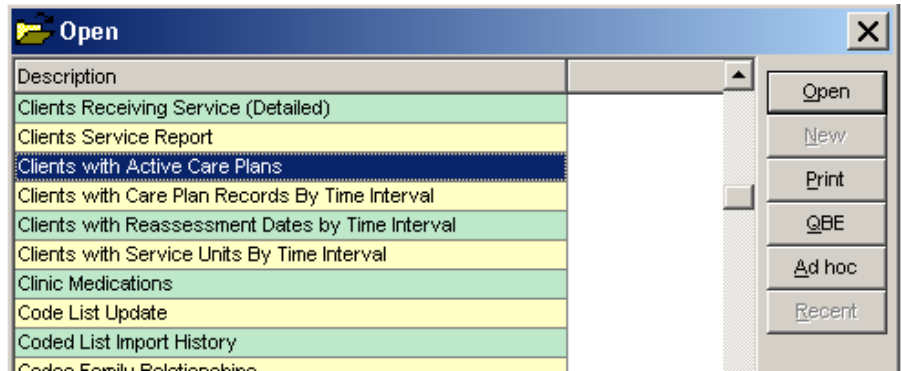
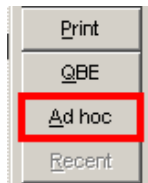


Ad Hoc Queries

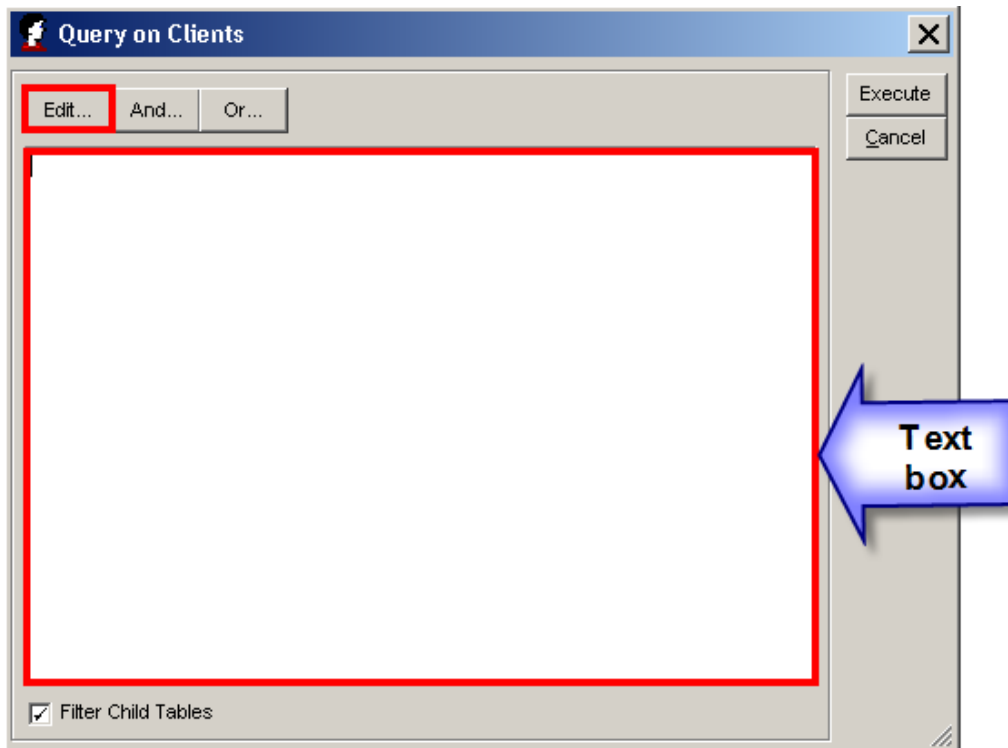
1. Single click on the query you want to run (Ex. Clients with Active Care Plans).



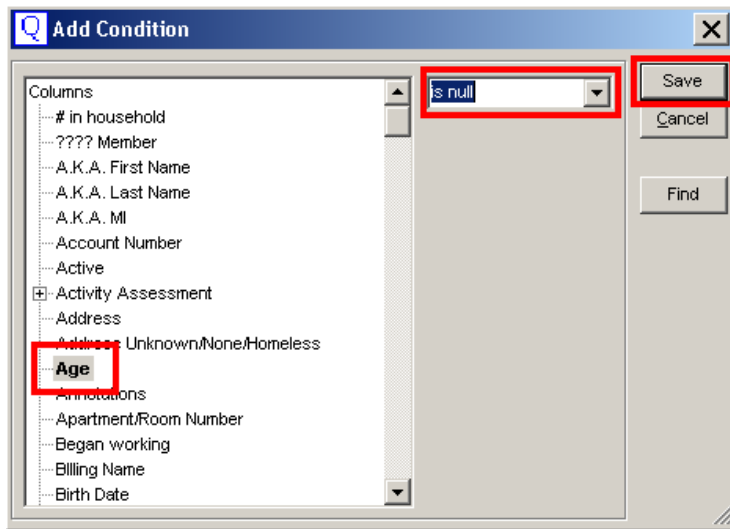
2. Click on the Ad hoc button



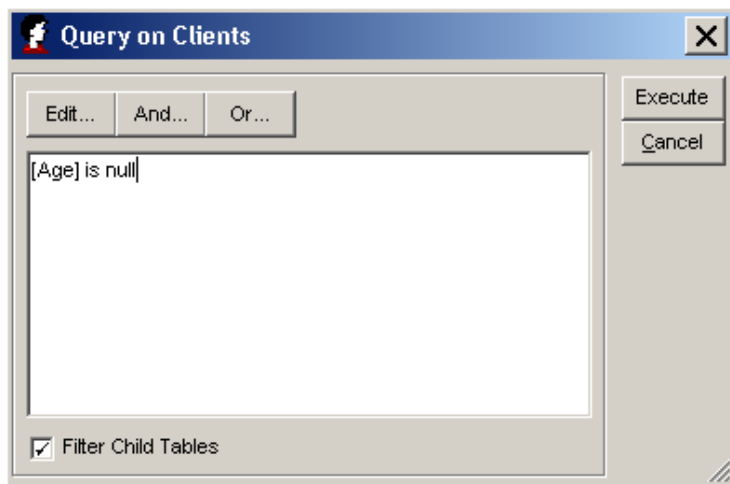
3. Click on the Edit... button, or Paste your Ad hoc text in the text box.



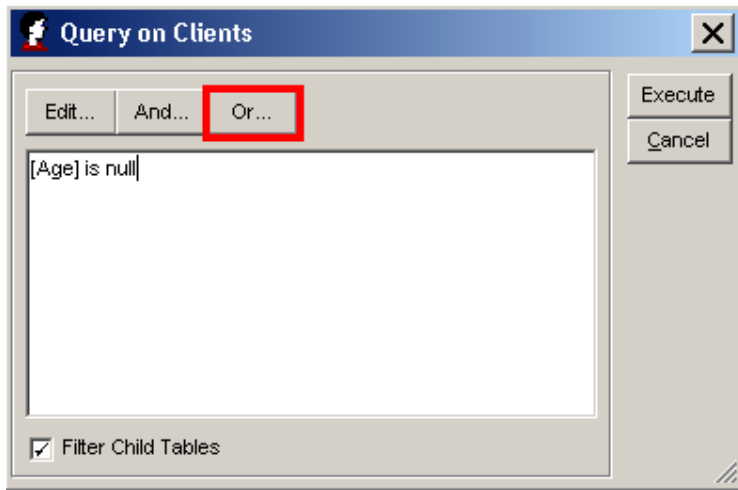
4. If using the edit button, select the conditions that you want to use; then select is null from the dropdown; then click on the Save button



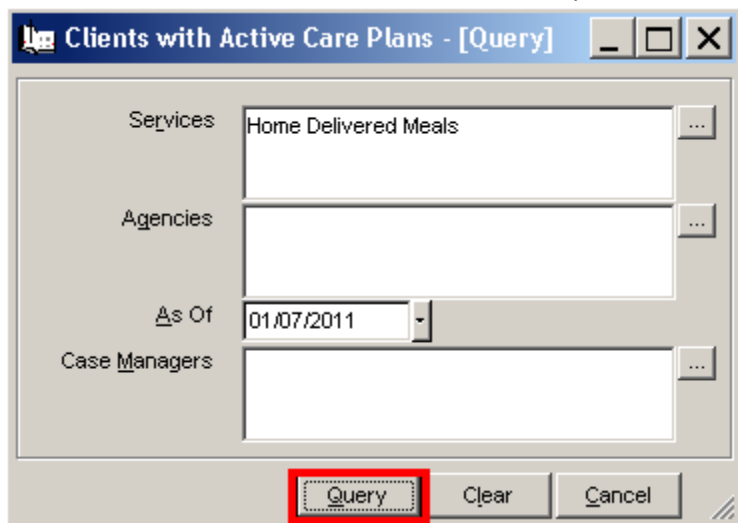
5. The condition is now set into the Text box



6. If you want to add additional conditions, click on the Or... or the And... button and repeat step 4.



7. Using And means all conditions need to exist, where Or means any of the conditions can exist. For example [Age] is > 90 and [Living Status] = 'Alone'. This will give you clients older than 90 that live alone.
8. After you have finished adding all the conditions you want, click on the Execute button. This will return you to the regular query condition window.
9. Enter the correct information and click on Query



10. The results will show all clients that meet all conditions (including the Ad hoc conditions).

In example above the results will show all clients that are eligible to receive Home Delivered Meals as of 1/7/2011 that are missing the client's age.

Sample Null Queries

Ad-hoc query to find missing CARS information on eligible clients.

Use the query - Clients with Service Units in a Time Interval

[Age] is null or
[Ethnicity] is null or
[Living Status] is null or
[Marital Status] is null or
[Poverty Status] is null or
[Race] is null or
[Rural] is null or
[Sex] is null or
[Sex at birth] is null or
[Sexual orientation] is null or
[Zip (5 digit)] is null

Or

Use the query – Clients Receiving Service (Detailed)

[Age] is null or
[Ethnicity] is null or
[Living Status] is null or
[Marital Status] is null or
[Poverty Status] is null or
[Race] is null or
[Rural] is null or
[Sex] is null or
[Sex at birth] is null or
[Sexual orientation] is null or
[Zip (5 digit)] is null

Ad-hoc query to find missing ADL/IADLs on eligible clients

Use the query – Clients with Service Units in a Time Interval

[California ADLs/IADLs\Last Updated] is null or
[California ADLs/IADLs\Bathing Safe Functioning Level (Level)\Safe Level of Functioning] is null or
[California ADLs/IADLs\Dressing Safe Functioning Level (Level)\Safe Level of Functioning] is null or
[California ADLs/IADLs\Eating Safe Functioning Level (Level)\Safe Level of Functioning] is null or
[California ADLs/IADLs\Heavy House Work Safe Functioning Level (Level)\Safe Level of Functioning] is null or
[California ADLs/IADLs\Light House Work Safe Functioning Level (Level)\Safe Level of Functioning] is null or
[California ADLs/IADLs\Manage Medications Safe Functioning Level (Level)\Safe Level of Functioning] is null
or
[California ADLs/IADLs\Money Management Safe Functioning Level (Level)\Safe Level of Functioning] is null
or
[California ADLs/IADLs\Meal Prep/Cleanup Safe Functioning Level (Level)\Safe Level of Functioning] is null or
[California ADLs/IADLs\Shopping/Errands Safe Functioning Level (Level)\Safe Level of Functioning] is null or
[California ADLs/IADLs\Telephone Safe Functioning Level (Level)\Safe Level of Functioning] is null or
[California ADLs/IADLs\Toileting Safe Functioning Level (Level)\Safe Level of Functioning] is null or
[California ADLs/IADLs\Transferring Safe Functioning Level (Level)\Safe Level of Functioning] is null or
[California ADLs/IADLs\Transportation Safe Functioning Level (Level)\Safe Level of Functioning] is null or
[California ADLs/IADLs\Walking Safe Functioning Level (Level)\Safe Level of Functioning] is null

Or

Use the query – Clients Receiving Service (Detailed)

[client\California ADLs/IADLs\Last Updated] is null
or [client\California ADLs/IADLs\Bathing Safe Functioning Level (Level)\Safe Level of Functioning] is null
or [client\California ADLs/IADLs\Dressing Safe Functioning Level (Level)\Safe Level of Functioning] is null
or [client\California ADLs/IADLs\Eating Safe Functioning Level (Level)\Safe Level of Functioning] is null
or [client\California ADLs/IADLs\Heavy House Work Safe Functioning Level (Level)\Safe Level of Functioning]
is null
or [client\California ADLs/IADLs\Light House Work Safe Functioning Level (Level)\Safe Level of Functioning]
is null
or [client\California ADLs/IADLs\Manage Medications Safe Functioning Level (Level)\Safe Level of
Functioning] is null
or [client\California ADLs/IADLs\Money Management Safe Functioning Level (Level)\Safe Level of
Functioning] is null
or [client\California ADLs/IADLs\Meal Prep/Cleanup Safe Functioning Level (Level)\Safe Level of Functioning]
is null
or [client\California ADLs/IADLs\Shopping/Errands Safe Functioning Level (Level)\Safe Level of Functioning]
is null
or [client\California ADLs/IADLs\Telephone Safe Functioning Level (Level)\Safe Level of Functioning] is null
or [client\California ADLs/IADLs\Toileting Safe Functioning Level (Level)\Safe Level of Functioning] is null
or [client\California ADLs/IADLs\Transferring Safe Functioning Level (Level)\Safe Level of Functioning] is null
or [client\California ADLs/IADLs\Transportation Safe Functioning Level (Level)\Safe Level of Functioning] is
null
or [client\California ADLs/IADLs\Walking Safe Functioning Level (Level)\Safe Level of Functioning] is null